

Be ready for what's



Brigantia Insider Threat Roadshow - London



NEXT At A Glance

- The Reveal Platform is a next-gen, cloud-native data protection platform.
- Reveal delivers risk insights and data loss prevention controls for endpoints, mobile devices and cloud apps.
- Detection and decision-making is streamlined with AI and ML; from a patent-pending endpoint agent with local machine learning, to actionable GenAI reports for analysts.
- 100+ customers and industry leading analysts recognise Reveal's differentiated way of solving today's challenges. Gartner notes Reveal as both a DLP and IRM Platform.

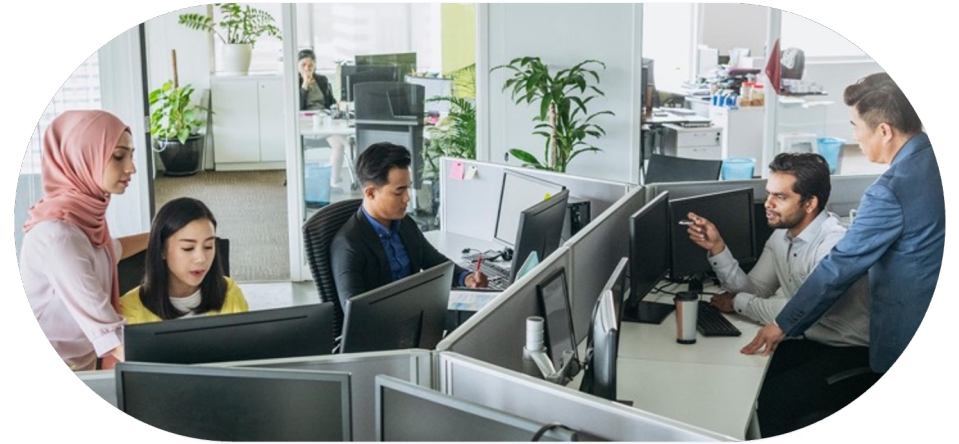


Awards & Certifications



THEN

On-prem data centers. Self-hosted apps.
Monitoring the network perimeter and endpoints
was sufficient to protect “centralized” data.



Your Data Has Always Been At Risk

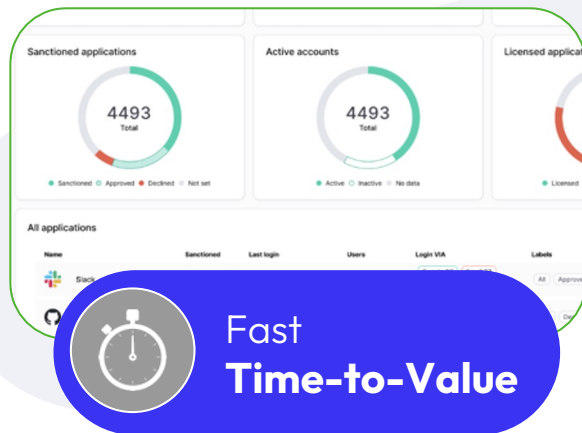
NOW

SaaS apps. Multi-cloud. Different endpoint
types. There’s no static perimeter to monitor.
Traditional data protection doesn’t work.

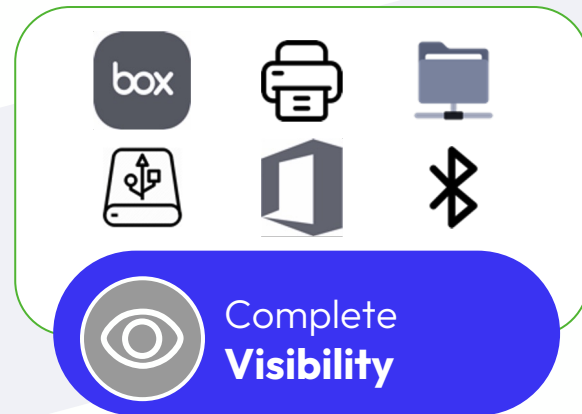


Introducing The Reveal Platform

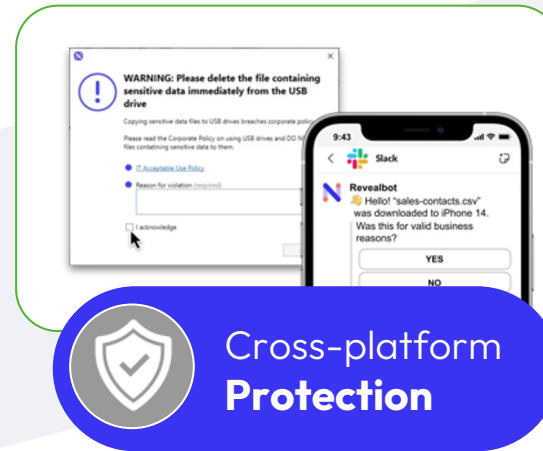
The optimal balance of risk insights and data loss prevention controls for endpoints, mobile devices and cloud apps.



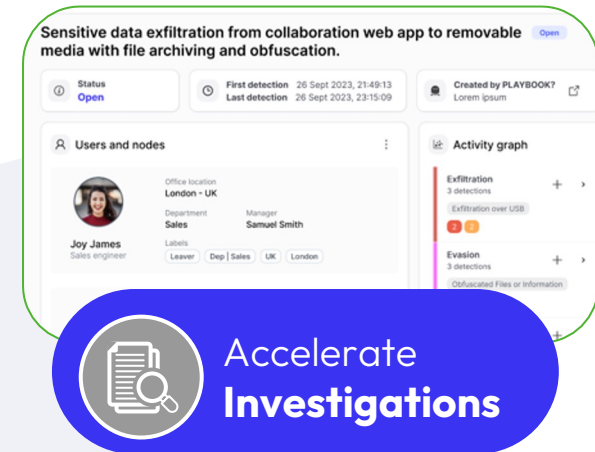
Fast Time-to-Value
Instant-on endpoint and cloud sensors; visibility without policy.



Cloud, system, user, data, and network telemetry, plus organizational context.



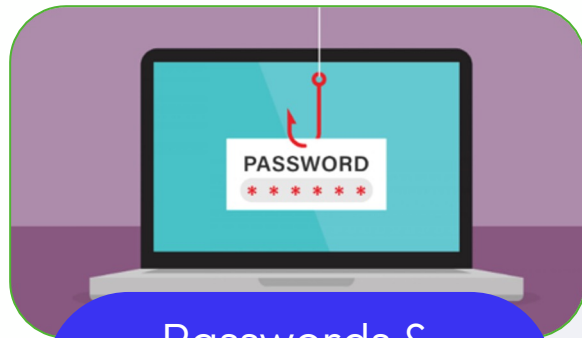
Data protection with dynamic responses, from ingress to egress, on managed and unmanaged devices.



Content and context based reporting across all touchpoints.

Introducing Three use cases for MSSP's

The optimal balance of risk insights and data loss prevention controls for endpoints, mobile devices and cloud apps.



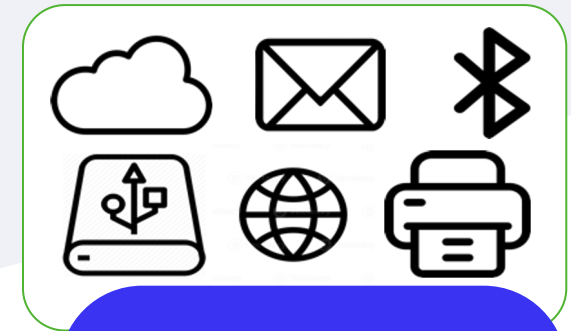
Passwords & Phishing

Instant-on endpoint and cloud sensors; visibility without policy.



ChatGPT and risk

Cloud, system, user, data, and network telemetry, plus organizational context.

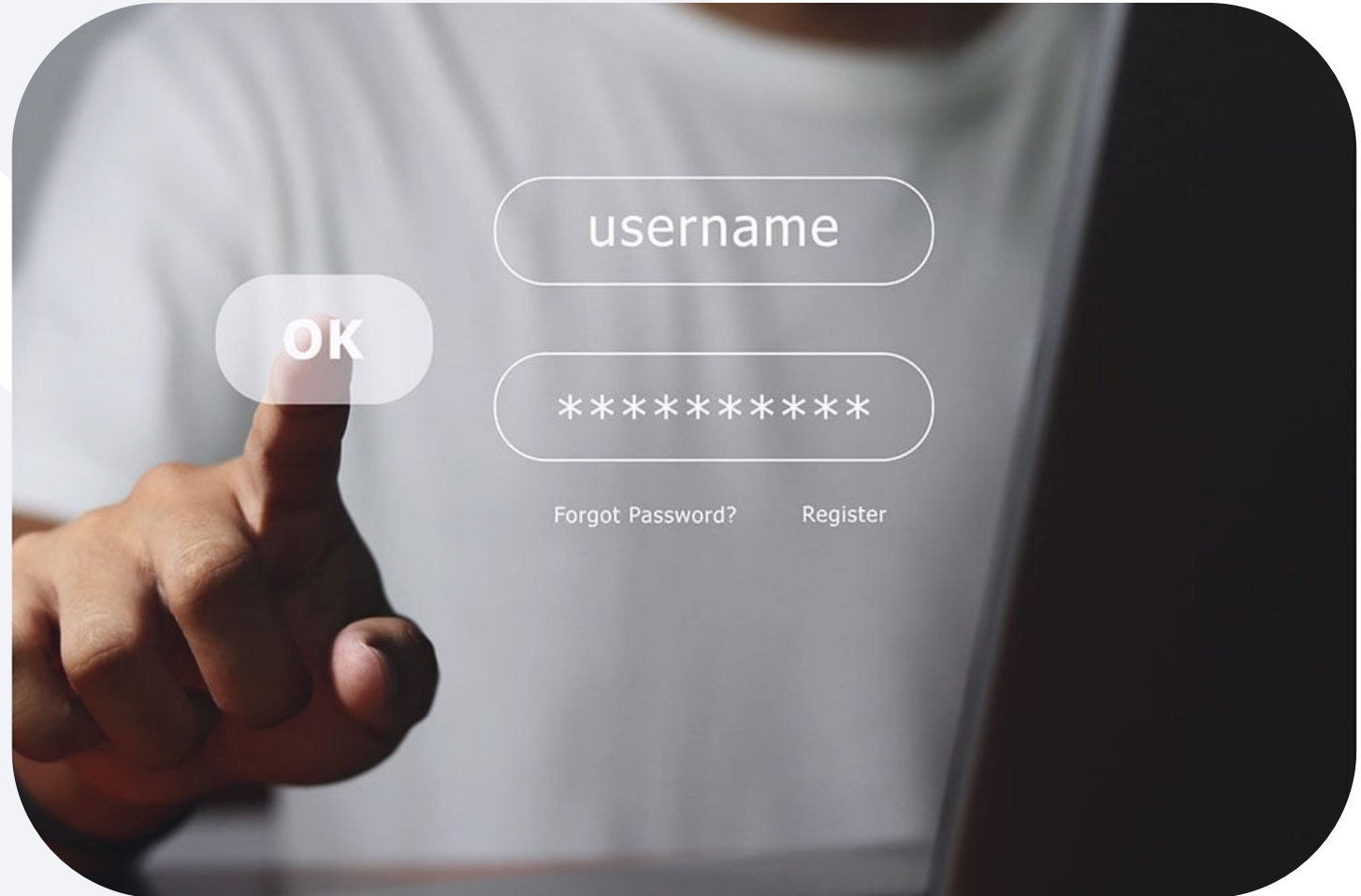


Web, Email, USB, Print

Data protection with dynamic responses, from ingress to egress, on managed and unmanaged devices.

Phishing

- Sensitive Data at Risk
- Exploitation of Human Vulnerability
- Simplicity and Effectiveness for Attackers



K

Outlook interface showing a list of emails and a selected email titled "DEMO - Outlook Password".

Left Sidebar (Navigation):

- Arkiv
- Start
- Skicka och ta emot
- Visa
- Hjälp
- Ny e-post
- Utkast
- Borttagna objekt
- stefan.jarlegren@jazzdemocl...
- Inkorg
- Utkast
- Skickat
- Borttagna objekt
- Arkiv
- Konversationshistorik
- RSS Feeds
- Skräppost
- Utkorg
- Sökmappar
- Grupper

Mail List (Center):

Prioriterad	Övrig	Efter Datum
Övrigt: Nya meddelanden (38) Microsoft Surveys, Microsoft Azure, Microsoft		
Learn	Låt dig inspireras genom kostna...	2023-11-20
Microsoft Security	Your weekly PIM digest for Next D...	2023-11-19
Microsoft Security	Microsoft Entra ID Protection Week...	2023-11-14
Learn	Logga in på ditt Microsoft Learn...	2023-11-13
Microsoft Outlook	Notification: test	2023-11-13
Microsoft Security	Your weekly PIM digest for Next D...	2023-11-12
Microsoft Azure	Action recommended: Ensure your ...	2023-11-12
Stefan Jarlegren DEMO - Outlook Password 2023-11-10 Stefan Jarlegren shared a file with you		

Selected Email (Right):

DEMO - Outlook Password

Stefan Jarlegren <stefan.jarlegren@nextdlp.com>
Till: Stefan Jarlegren
fre 2023-11-10 10:39

Om meddelandet inte visas som det ska kan du klicka här för att visa det i en webbläsare.

Översätt meddelandet till: Svenska | Översätt aldrig från: Engelska | Översättningsinställningar

Stefan Jarlegren shared a file with you

Here's the document that Stefan Jarlegren shared with you.

Shared RII file

Det finns flera objekt i den här mappen på servern
[Klicka här för att hämta fler meddelanden från servern](#)
[Microsoft Exchange](#)

Objekt: 509 Olästa: 93

Alla mappar är uppdaterade. Ansluten till: Microsoft Exchange

Visningsinställningar

100 %

Skriv här för att söka

Nära rekord

09:03
2024-02-20

AI Services

- **Reveal can reduce insider risk from ChatGPT**
- **How popular is ChatGPT?**
- **How can Reveal monitor and secure data headed for ChatGPT?**

Visited ChatGPT

Enable policy ☒

Detects when a user visits a disallowed website. Note: If the "Domains" and "URLs" parameters are left empty, the policy will not monitor any websites. Subsequent detections/incidents for the same domain will not be generated until five minutes after the first detection.

Requirements: `agent_version >= 5.2.3` Policy template: `Unauthorized website accessed v.5.0.0`

Display message ☒

Title

Company data at risk

Body

I

B

.data

Please be aware that ChatGPT is a third-party website and so it is against policy to use company data with the service as there is a risk of leaking information and may compromise intellectual property.

Include link to URL ☐

URL

E.g. www.example.com/company_policy.html

Link text (0 of 40 characters)

E.g. Open company policy

Make clicking the link mandatory ☐

Include feedback form to provide a reason for the violation ☐

Feedback form text (20 of 40 characters)

Reason for violation

Make submitting feedback mandatory ☐

Rate limit messages on screen ☒

Display no more than one message per

Day(s)

Hour(s)

Min(s)

Sec(s)

7

0

0

0

Include mandatory acknowledgement checkbox ☐

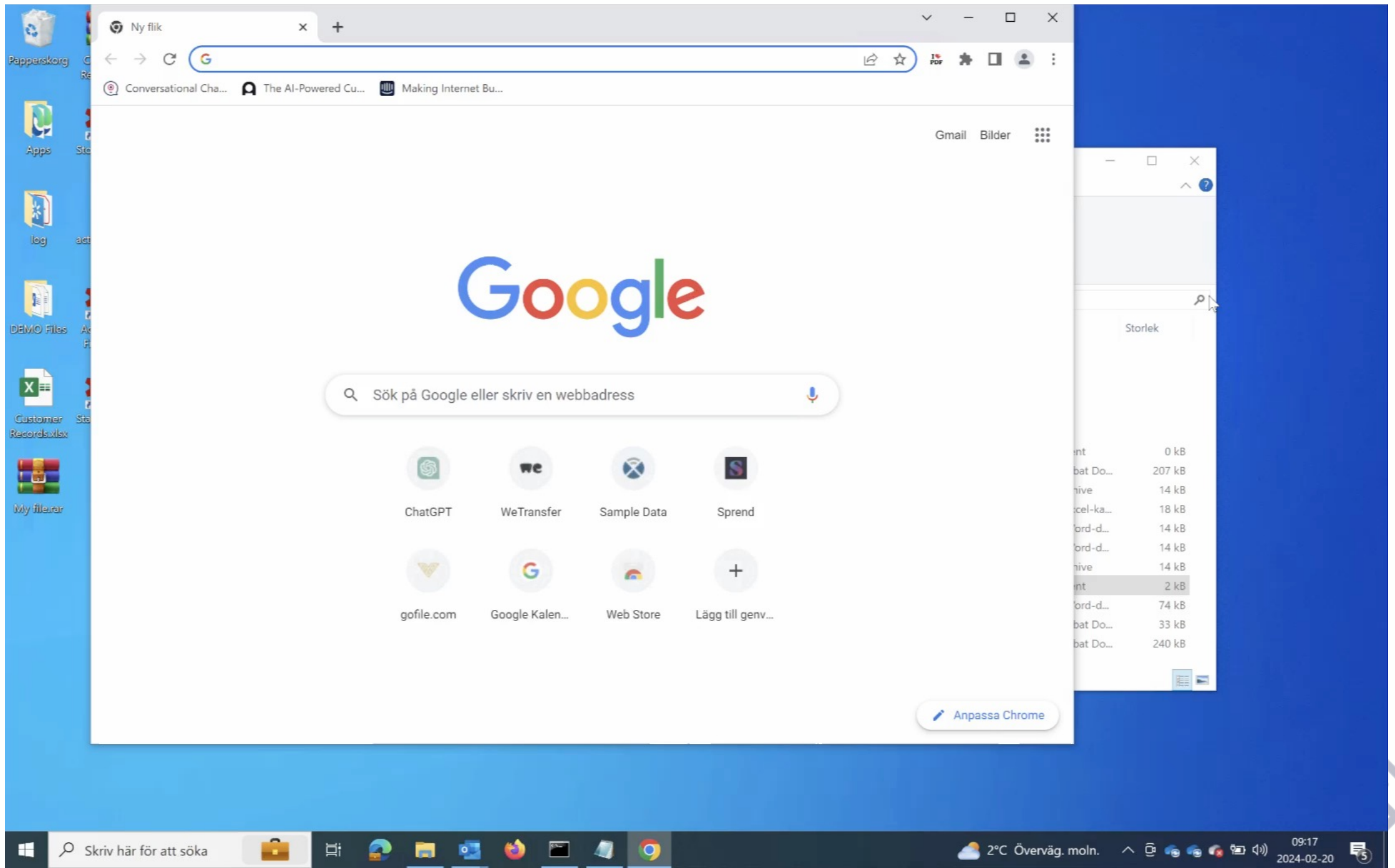
Acknowledgement checkbox text (13 of 40 characters)

I acknowledge

Cancel

Save

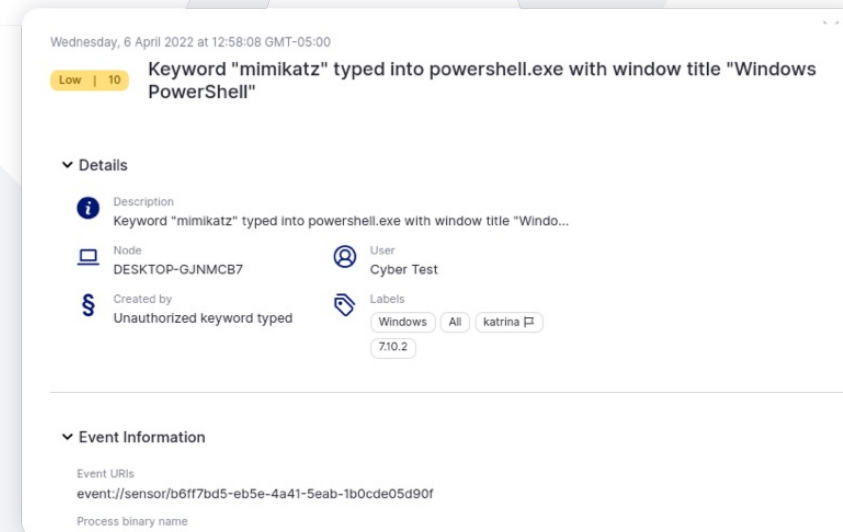
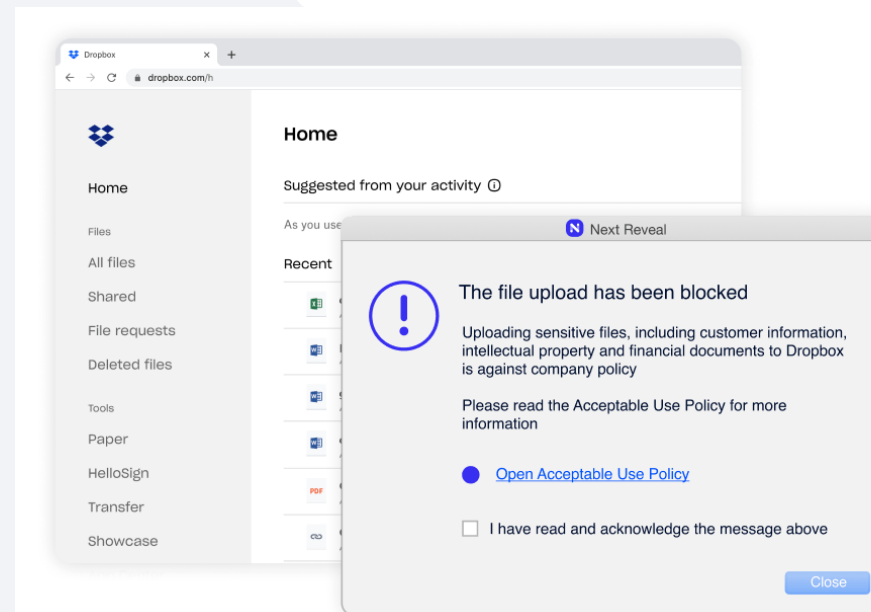
Be Ready For What's

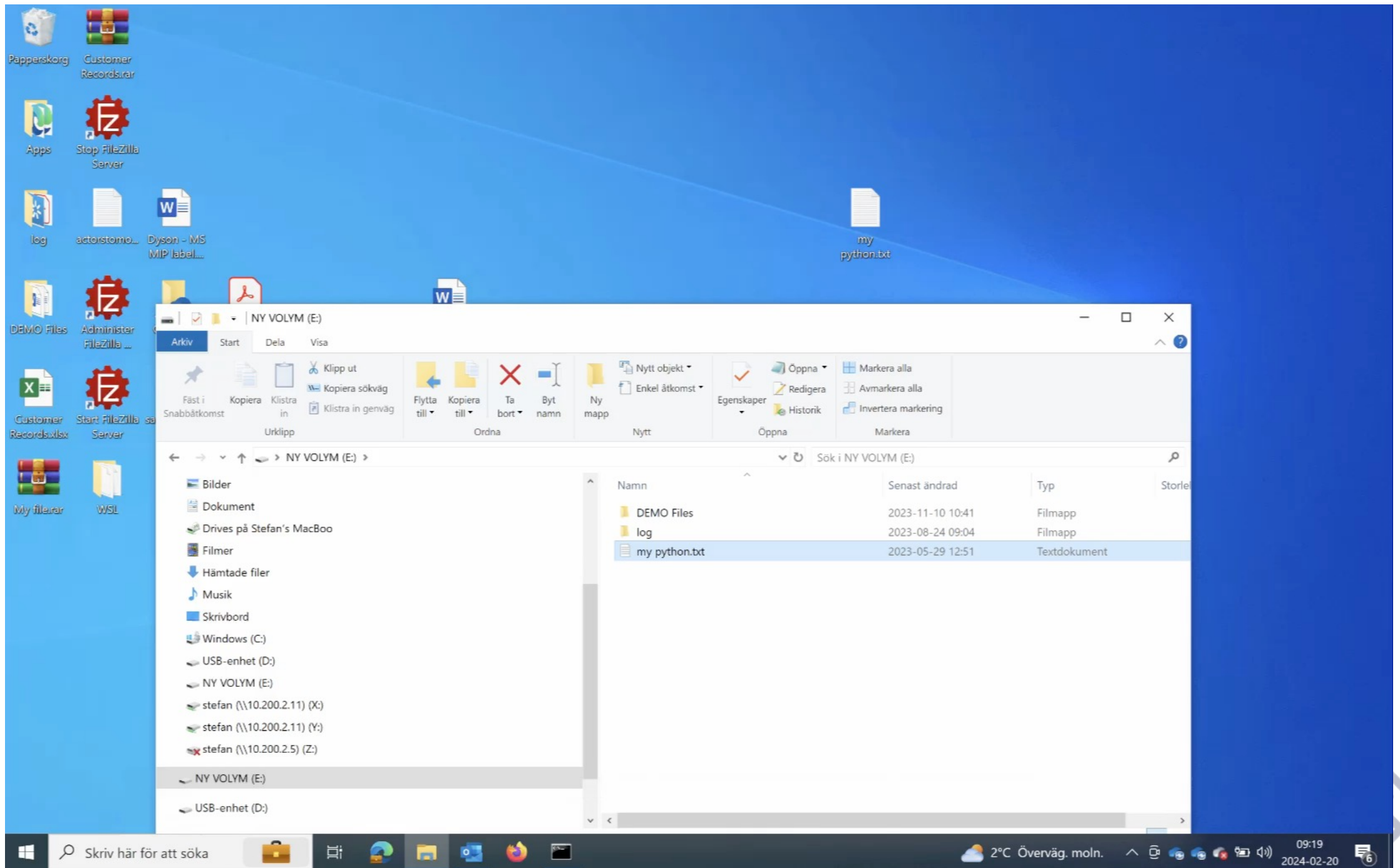


Cross Platform DLP Controls

Core functionality for data protection

- Incident-based user education reduces accidental loss
- Screen capture and clipboard control
- Email controls, block data loss
- Web controls, Block malicious code and content
- Removable storage security, Block unauthorized devices
- Print controls, print visibility – home and work





Industry First MSSP Console for DLP/Insider Risk

Leverage the Reveal MSSP Console to monitor your customers' environments and in turn mitigate cyber risks

Scalable

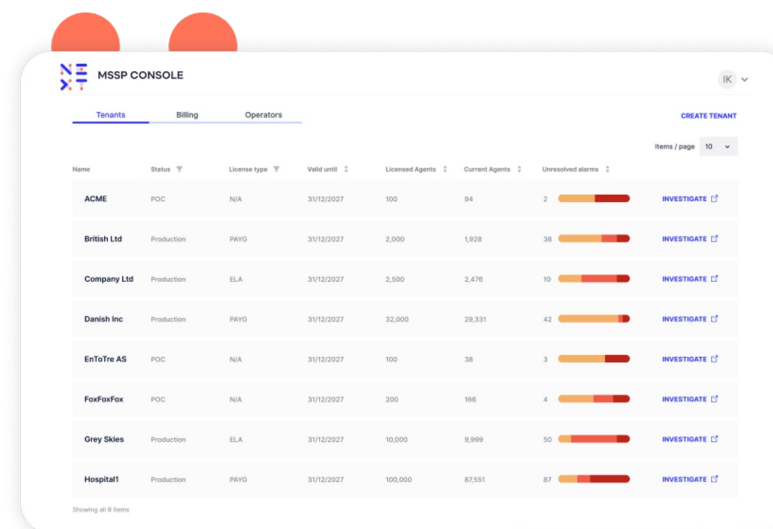
- Create and manage multiple SaaS deployments
- Automatic and easy-to-download billing reports
- Detect and respond to cyber risks across multiple tenants

Simple

- Manage tenant transition from POC to production
- Access all tenants from a single console
- Benchmark alerts across multiple tenants

Secure

- Utilise Single Sign-On (SSO) authentication to access the console
- Manage Operators' permissions to tenants
- One (secure) click away from any of your monitored tenants



The screenshot displays the 'MSSP CONSOLE' interface. It features a navigation bar with 'Tenants', 'Billing', and 'Operators' tabs. A 'CREATE TENANT' button is visible in the top right. Below the navigation bar is a table listing tenants. Each row contains a tenant name, status, license type, valid until date, licensed agents, current agents, and unresolved alerts. A progress bar and an 'INVESTIGATE' button are also present for each tenant.

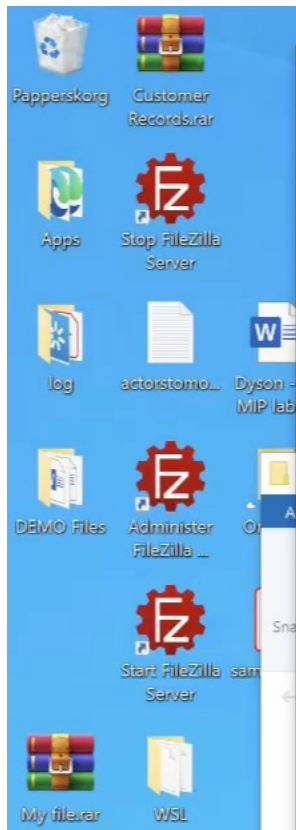
Name	Status	License type	Valid until	Licensed Agents	Current Agents	Unresolved alerts	
ACME	POC	N/A	31/12/2027	100	84	2	<div><div></div></div> INVESTIGATE
British Ltd	Production	PAYG	31/12/2027	2,000	1,928	38	<div><div></div></div> INVESTIGATE
Company Ltd	Production	ELA	31/12/2027	2,500	2,476	10	<div><div></div></div> INVESTIGATE
Danish Inc	Production	PAYG	31/12/2027	32,000	28,331	42	<div><div></div></div> INVESTIGATE
EnToThe AS	POC	N/A	31/12/2027	100	38	3	<div><div></div></div> INVESTIGATE
FoxFoxFox	POC	N/A	31/12/2027	200	166	4	<div><div></div></div> INVESTIGATE
Grey Skies	Production	ELA	31/12/2027	10,000	8,999	50	<div><div></div></div> INVESTIGATE
Hospital!	Production	PAYG	31/12/2027	100,000	87,551	87	<div><div></div></div> INVESTIGATE

Detect and respond to cyber risks across multiple environments, easily diving down into an environment and seamlessly jumping to another.

Effortlessly charge your customers by using the **automatic and easy-to-download billing reports**.

Be Ready For What's





Ny flik

G

Conversational Cha...

The AI-Powered log...

Making Internet Bu...

Gmail

Bilder

Google

Sök på Google eller skriv en webbadress

ChatGPT

WeTransfer

Sample Data

Sprend

gofile.com

Google Kalen...

Web Store

Lägg till genv...

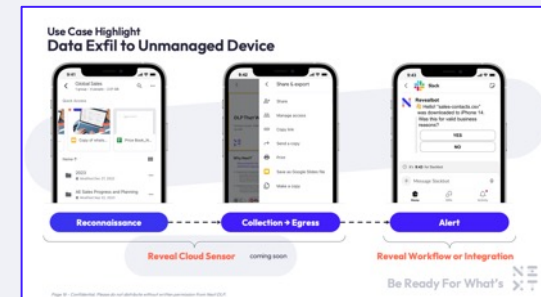
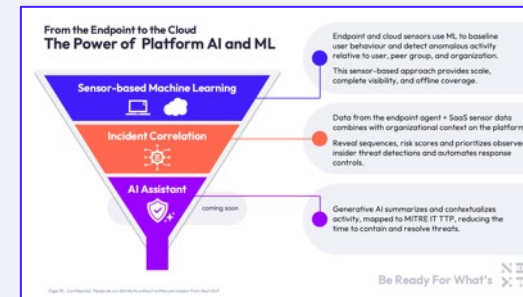
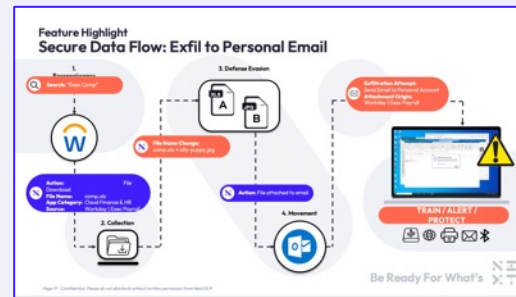
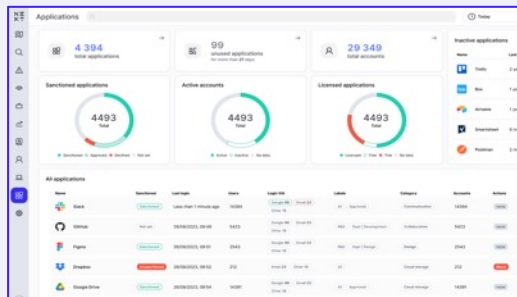
Anpassa Chrome

stefan (\\10.200.2.5) (Z:)

12 objekt 1 objekt markerat 2,15 kB

Come and talk about the future as well!

- SaaS Visibility
- Secure Data Dflow – follow the data
- XTND – AI service
- Unmanaged Devices – mobiles and tablets





Be Ready for What's Next

