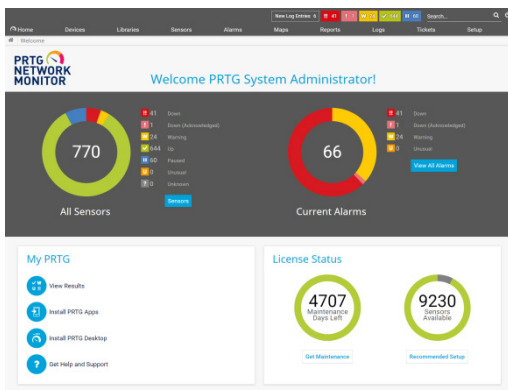


Why Paessler?

As your digital network grows, keeping your IT systems in check, running smoothly and without disruption is more important than ever. Paessler Router Traffic Grapher (PRTG) is an expert monitoring platform that gives full, real-time visibility across every part of your IT infrastructure. It helps track performance, service levels and the health of your systems, proactively alerting you to issues so they can be resolved quickly before having an impact your business.









No matter the size of your business or set up, Paessler grows with you, keeping an eye on the health of your systems so they can continue to run optimally.



Challenges Paessler solves

If you want to keep your business operations running smoothly, you need to be on top of your IT. PRTG provides the control and peace of mind you need, providing intelligent insights and confidence that your network is completely monitored. Built-in sensors will detect anomalies in real time and the proactive alerts through a centralised dashboard means performance issues and potential risks are identified and can be remediated quickly.

Benefits of Paessler

-  **Entire IT environments monitored** – including unlimited remote locations, all through a central dashboard.
-  **Fast issue detection** – real-time alerts allow for quick remediation and reduces the risk of negative impacts.
-  **Complete peace of mind** – gain visibility across all IT, OT and IoT infrastructure.
-  **Seamless integration with popular tools** – including Cisco and VMware.
-  **Customisable configurations** – monitoring tailored to your business and setup.
-  **Scalable** – Paessler will grow with your business, from small start-ups to enterprises.
-  **Save time and money** - prevent outages, be alerted about failures and IT health issues, optimise networks and improve your services.
-  **Monitor on the go** – PRTG apps for iOS and Android means you can check in whenever you need to.

